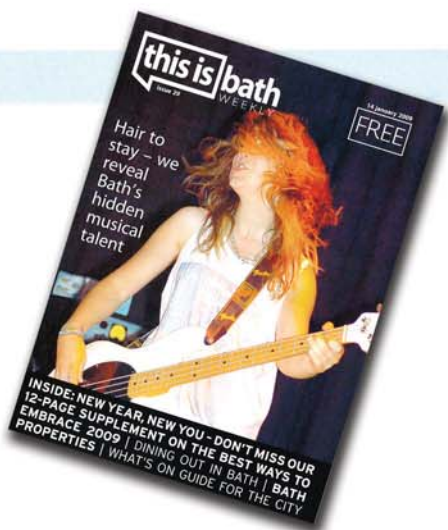


this is bath  
January 2009



### Designer Solutions

#### INTERIORS



#### THE AMMIQUE BED



for you and your home



#### EXTERIORS



RENOVATIONS & SPECIALIST BUILDING SERVICES

Mainstay  
designs

since 1983

10-12 Silver Street Midsomer Norton BATH BA3 2EX tel 01761 415427 fax 01761 411508  
email info@mainstaydesigns.com web www.mainstaydesigns.com

mainstay not mainstream...



MAINSTAY DESIGNS: bespoke mirror fridge detail

# Bespoke design is the way ahead

Whether you're renovating or redecorating your home this new year or simply plan to change the layout and add some new statement accessories, bespoke design could be exactly what you're looking for.

As you are dictating the form and function of the design, it will fit into your lifestyle perfectly and become the talking point of your home.

Ever since it was established in 1983 the team at Mainstay Designs has focused on quality of design and manufacture through to completion of every project it has undertaken, whether large or small.

More than 90 per cent of Mainstay Design's commissions come from referrals, and the company has completed a wide variety of design and build projects, from general repair and maintenance works to home extensions and total renovations.

It also designs and manufactures fitted and freestanding furniture and the focus is on providing well designed and quality manufactured products.

The company's philosophy has always centred on sustainability. By using FSC timbers only and by carefully sourcing materials that are environmentally sound and ethically managed, Mainstay Designs has been designing and

making products for more than 25 years that are durable and can be recycled, restyled and re-customised as trends, and clients' needs, change.

Founders of Mainstay Designs, and its sister company Ammique Ltd, Marlene and Colin Greenhalgh are optimistic that the global financial crisis will impact favourably on the sustainable use of resources in the long term.

"There would appear to be little doubt that the sorry state of the global economy at present will affect how we shop in the short term. However, it makes sense for us to buy with the long term in mind rather than continue to waste out precious resources," believes Marlene.

"The old adage of 'waste not, want not' is as important today as ever and the need to invest in better designed and innovative products that are functional, adaptable and are built to last, is a pretty seductive message and hopefully an enduring one."

■ The Design Studio is in Midsomer Norton and is open Monday to Friday, evening and weekends. For more information call 01761 415427 or 01761 419544 or visit either [www.mainstaydesigns.com](http://www.mainstaydesigns.com) or [www.ammique.com](http://www.ammique.com)